



t : 01268 350 115 e : info@denhamsecurity.co.uk w : www.denhamsecurity.co.uk

Hikvision HD CCTV Phone / tablet application Setup guide + instructions.

- Download from App Store or Google play store.
- IVMS-4500 (red eye icon)



- Open application
- Click pencil icon, select Europe then United Kingdom
- Click menu icon (top left)
- Click Hik-connect
- Click Login
- Enter email - **Email you registered on day of installation**
- Enter password - **Cctv4321** (capital C)
- Click Login
- Click menu icon (top left)
- Click Devices
- Click + icon (top right)
- Click manual adding

Alias – **Home / Work ect.**

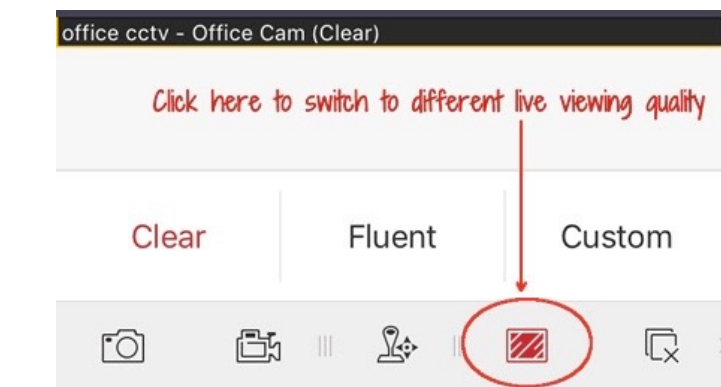
Register mode - **Hik-connect Domain**

Device domain - **Select model number**

User name -

Password -

- Click save icon (top right)
- Click “Start live Preview”





Live view.

- Click menu icon (top left)
- Click “Live view”
- Click button 1 for a 1cam view. You can swipe between all of your cams.
- Click button 4 for a split screen view of 4 cams. You can swipe between multiple split screens.
- Click button 9 or 16 for larger cam split screens.

To playback footage.

- Click menu icon (top left)
- Click Remote Playback
- Click + icon
- Click on “From” box
- Select Date and time to playback
- Click on “To” box
- Select end Date and time
- Select cam to playback
- Double click the image to make bigger
- Scroll on the timeline at bottom to search through.
- Swipe image to top of screen to cancel.

Function Buttons.

Camera icon - Snapshot cam image onto your device.

Camcorder icon - Record cam footage onto your device, click again to end recording.

Square with diagonal lines - Adjust camera-viewing quality, Select “Clear” for HD image or “Fluent” to downgrade quality when mobile connection is not good.

Square with x - Cancel all live camera feeds.

Magnify glass icon - Click when viewing a single cam to zoom in, click again to cancel.

Picture & Video.

- Camera snapshots and recordings will be saved here.
- Click on picture or video and click option button to save to phone camera roll.